



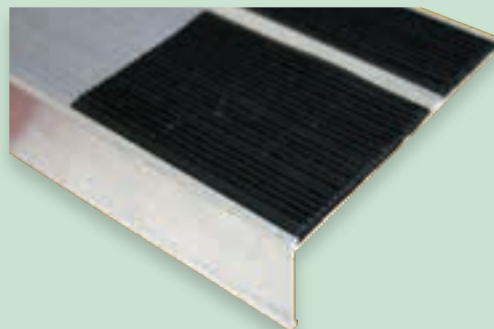
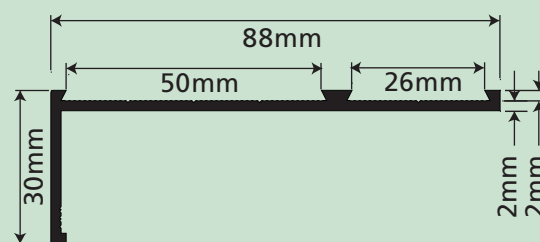
MX54 | Aluminium Double Square Nosing

MX54 is designed for use in internal installations, over wooden or concrete steps to increase the level of safety by providing a sure footing when ascending or descending steps.

MX54 is specified to withstand the heaviest of traffic situations that may be encountered, for example - school steps, steps at commercial or public venues and facilities. Not suitable for curved or otherwise contoured stairs.

Product Specifications

Product Code:..... MX54
Aluminium:..... 6063/T6 Hardness
Overall Length:3.66m
Horizontal Width:88mm
Vertical Height:30mm
Finish: Matte Natural Anodised
Processing:..... Drilled and Countersunk
Pieces Per Carton:..... 10 Lengths



Installation Instructions

Installed by butting up to existing vinyl flooring.

Can be secured in place by drilling and counter-sinking the screw heads in a drill and plug installation.

Recommended to be used with HT50 (50mm) and HT26 (26mm) Black/Grey/Safety Yellow TPE inserts (sold separately).

To ensure the TPE stair insert is correctly adhered to the aluminium nosing, we recommend the use of MJS Max Bond 102 Super Contact Adhesive.

Best results are obtained by ensuring both bonding surfaces are clean, then applying an even coat of adhesive to both surfaces by brush or roller. Allow solvent to evaporate and adhesive to become tacky and dry to touch. Time to tack up is 10-15 minutes at 20°C, open time is approximately 45 minutes.

Ensure the insert is correctly positioned before bringing it into contact with the nosing, as no adjustment is possible once the surfaces have met. Complete by using a hand roller, pressing enough to bring both surfaces into contact.

MJS STOCKISTS