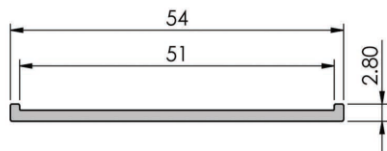
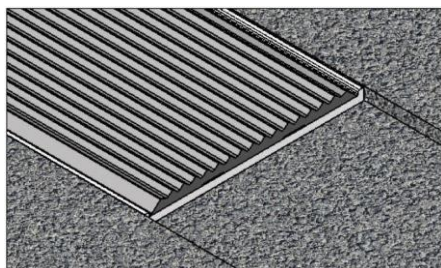


# REBATED NOSING – MJ153



MJ153 (D/C/S)



MJ153 with MJ152 insert

- ✓ Designed for installation in rebated channel
- ✓ Supplied in 3.66m lengths
- ✓ Available in Silver anodised finish
- ✓ Countersink drilled at 200mm spacing with SS screws & 6mm plugs included
- ✓ Insert channel 51mm
- ✓ Designed for use with 50mm wide insert
- ✓ Visible surfaces are fitted with foil protection, to be removed after installation

## Compliance

- ✓ Profile designed to comply with AS1428.1-2009
- ✓ Use with insert MJ152, 50SI or ASAT5020 inserts for compliance with AS4586:2013

CODE	DESCRIPTION	PK QTY	BARCODE
MJ153 / SI	REBATED NOSING PLATE 3.66M X 54MM SILVER - USE WITH 50MM INSERT	10	9314942689737

## Installation Instructions

Can be secured in place by drilling and counter-sinking the screw heads in a drill and plug installation (6mm SDS PLUS or SPZ060160 drill bit required), can be used in conjunction with MJS GF400 construction adhesive for additional strength if required.

## Insert installation

**MJ152 Aluminium Stair Insert – 50mm wide P4 Slip Rating to requirements of AS4586:2013 (Sold Separately)**

**50SI Stair insert - 50mm wide P5 Slip Rating to requirements of AS4586:2013 (Sold Separately)**

To ensure the stair insert is correctly adhered to the aluminium nosing, we recommend the use of MJS 102 Contact Adhesive.

Best results are obtained by ensuring both bonding surfaces are clean, then apply even coats of adhesive to both surfaces by brush or roller. Allow solvent to evaporate and adhesive to become tacky and dry to touch. Time to tack up is 10-15 minutes at 20°C, open time is approximately 45 minutes.

Ensure the insert is correctly positioned before bringing it into contact with the nosing, as no adjustment is possible once the surfaces have met. Complete by using a hand roller, pressing enough to bring both surfaces into contact.

**ASAT5020 Anti-Slip tape – 50mm wide P5 Slip Rating to requirements of AS4586:2013 (Sold Separately)**

Ensure surface is dry and free from dust, loose particles, oils and grease. Cut the ASAT5020 Anti-slip tape to length required, correctly position prior to bringing tape into contact with the nosing and apply to surface. Complete by using a hand roller, pressing enough to bring both surfaces into contact.

**Disclaimer:** Nosings and Inserts should be certified for application prior to installation.